

U.S. Army Public Health Center

Army Influenza Activity Report

Week ending 23 January 2021 (Week 3)

Influenza Vaccination Coverage*

As of 28 January 2021

88%	Army Active Duty
79%	Army Guard
85%	Army Reserve

*Data Source: MEDPROS

Click to enlarge images.

SUMMARY

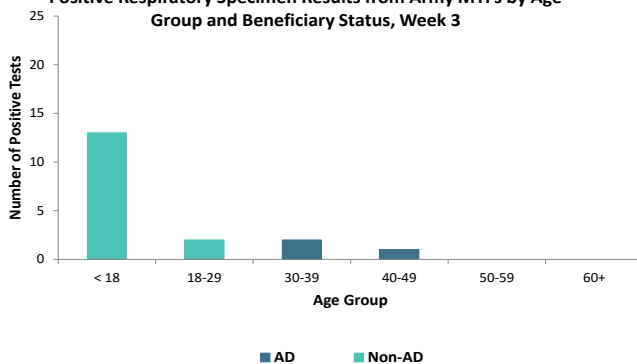
Influenza activity remains low in the Army population. The proportion of positive influenza A specimens for the Army in week 3 is 0.1%, which is significantly lower than that of the 2019-2020 season (24.1%) for the same time period. No hospitalizations were reported in week 3; the season total thus far is four compared to 118 influenza-associated hospitalizations reported as of this time last season. Individuals younger than 18 were most affected by select respiratory illnesses in the Army population; 87% (n=13) of positive specimens were collected from this age group. Nationwide, influenza activity is low with 0.3% of specimens tested by clinical laboratories being positive for influenza. Although flu activity is lower than usual, flu vaccines are still recommended.

GEOGRAPHIC SPREAD

Data on the geographical spread of influenza is unavailable this season due to the COVID-19 pandemic. For information from previous seasons and additional information about nationwide influenza surveillance, please visit the Centers for Disease Control and Prevention's website by clicking [here](#).

DEMOGRAPHICS

Positive Respiratory Specimen Results from Army MTFs by Age Group and Beneficiary Status, Week 3

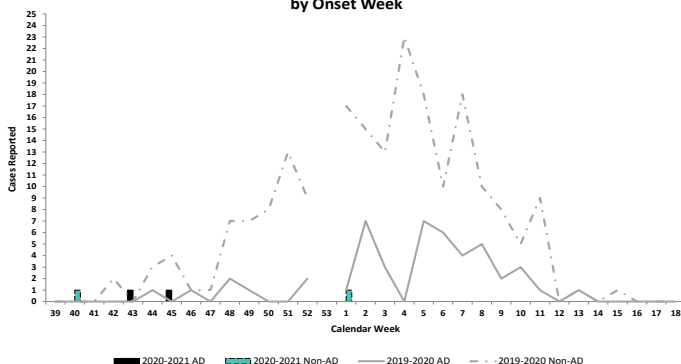


AD: Three positive respiratory specimens were collected from active duty (AD) Service members during week 3; they were collected from individuals in the 30-39 (n=2) and 40-49 (n=1) age groups.

Non-AD: Fifteen positive respiratory specimens were collected from non-AD individuals during week 3; 87% (n=13) were from those under 18 years of age and 13% (n=2) were collected from individuals in the 18-29 age group.

INFLUENZA-ASSOCIATED HOSPITALIZATIONS

Army Influenza-Associated Hospitalizations Reported in DRSi by Onset Week



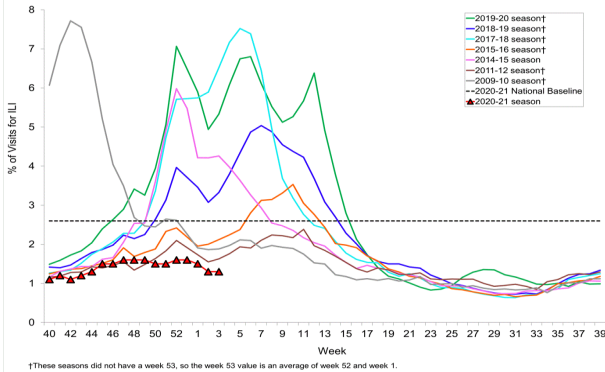
No influenza-associated hospitalizations with onset dates in week 3 were reported to the Disease Reporting System internet (DRSi); four hospitalizations have been reported for the entire season thus far. During the 2019-2020 season, 16 hospitalizations were reported in week 3 (with 118 hospitalizations reported from start of the season through week 3).

*DRSi does not capture cases older than 65 years old for influenza-associated hospitalizations.

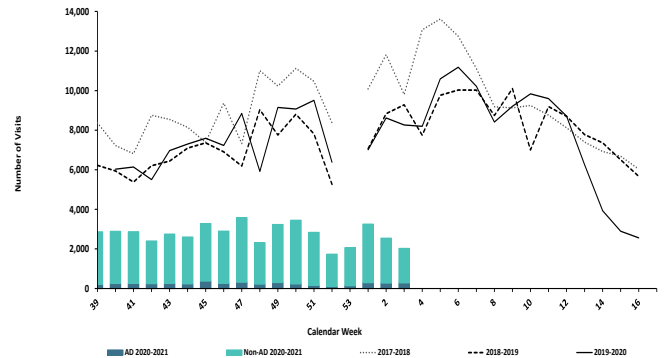
ILI ACTIVITY - UNITED STATES

ILI ACTIVITY - ARMY

Percentage of Visits for Influenza-like Illness (ILI) Reported by the U.S. Outpatient Influenza-like Illness Surveillance Network (ILINet), Weekly National Summary, 2020-2021 and Selected Previous Seasons



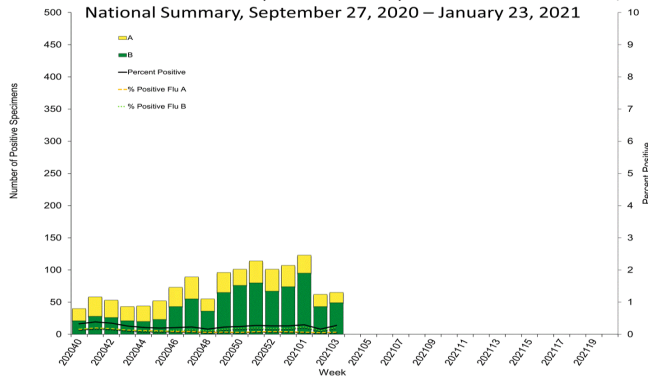
ESSENCE Weekly Outpatient Clinic Visits for Influenza-like Illness Army MTFs, All Services, 2017-2021



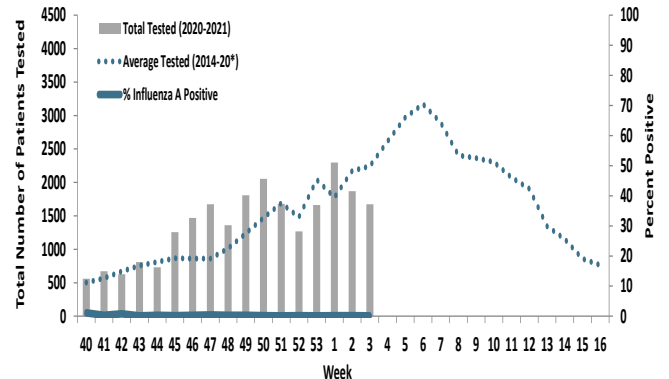
Nationwide in week 3, incident ILI activity was 1.3%; this is below the national baseline of 2.6%. At Army medical treatment facilities, incident ILI activity decreased by 20% from week 2 to week 3. The majority of ILI encounters (86%) occurred among non-AD patients in week 3.

LABORATORY RESPIRATORY SPECIMEN TESTING

Influenza Positive Tests Reported to CDC by U.S. Clinical Laboratories, National Summary, September 27, 2020 – January 23, 2021



Proportion of Positive Influenza A Specimens for U.S. Army 2020-2021



Nationwide during week 3, a total of 23,549 specimens were tested for influenza by select clinical laboratories and submitted to CDC; 65 (0.3%) were positive. Influenza B accounted for 75.4% (n=49) of the total positive specimens. In the Army population, 0.1% of 1,674 specimens tested for influenza A were positive in week 3.

		Week 53	Week 1	Week 2	Week 3	Season Total
Army MTF Laboratory Results, 2020-21	Influenza A	2	4	4	1	64
	Influenza B	3	4	3	1	64
	Adenovirus	1	1	3	2	56
	Enterovirus	18	17	14	14	225
	Parainfluenza	0	0	1	0	8
	RSV	0	1	2	0	32
	Negative	3,625	4,785	4,142	3,793	55,477
Total	3,649	4,812	4,169	3,811	55,926	

Of the 3,811 specimens tested in week 3, less than 1% (n=18) were positive for any type of respiratory illness. Rhinovirus/enterovirus accounted for 78% (n=14) of positive specimens, adenovirus for 11% (n=2), and influenza A and influenza B each accounted for 6% (n=1).

Additionally, the reported number of specimens tested decreased by 9% since week 2 (n=4,169).

Locations providing week 3 laboratory data as of 27 January 2021: Ft Belvoir, Ft Benning, Ft Bliss, Ft Campbell, Ft Carson, Ft Drum, Ft Eustis, Ft Gordon, Ft Hood, Ft Huachuca, Ft Irwin, Ft Jackson, Ft Knox, Ft Leavenworth, Ft Lee, Ft Leonard Wood, Ft Lewis, Ft Meade, Ft Polk, Ft Riley, Ft Rucker, Ft Sam Houston, Ft Sill, Ft Stewart, Ft Wainwright, Korea, Landstuhl Regional Medical Center, Redstone Arsenal, Tripler Army Medical Center, the U.S. Military Academy, and Walter Reed National Military Medical Center.

LABORATORY RESPIRATORY SPECIMEN TESTING DURING WEEK 3

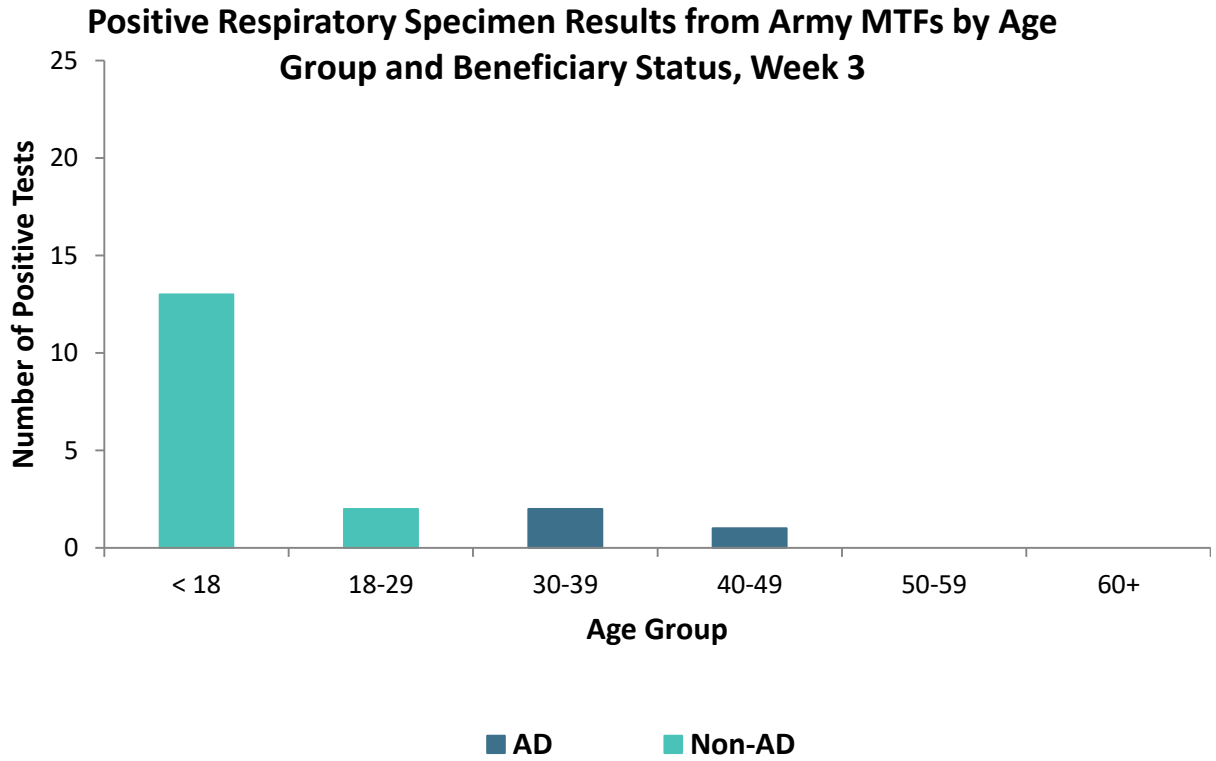
Region	Installation	Influenza A		Influenza B		Adenovirus	
		% Positive	Baseline % Positive	% Positive	Baseline % Positive	% Positive	Baseline % Positive
RHC-A	Ft. Belvoir	0	13.8	0	28.9		15
	Ft. Benning	0	18.5	0	13		
	Ft. Campbell	0	13	0	11.8		100
	Ft. Drum	0	16.7	0	100		
	Ft. Gordon	0	17.9	0	19.4		100
	Ft. Jackson	0	27.6	0	5.3		
	Ft. Knox	0	15.4	0	0		
	Ft. Lee	0	16.3	0	100		
	Ft. Meade	0	40.7	0			
	Ft. Rucker	0	20	0	9.1		
	Ft. Stewart	0	27.7	3.6	6.6		
Redstone Arsenal	0	0	0	5.9			
U.S. Military Academy	0	26.8	0	12.5		100	
RHC-C	Ft. Bliss	0	18.3	0	33.9		2.3
	Ft. Carson	0	7.5	0	100		
	Ft. Hood	0	19.7	0	6.4	8.3	4.8
	Ft. Huachuca	0	23.8	0	18.2		
	Ft. Leavenworth	0	19.2	0	3.8		
	Ft. Leonard Wood	0	4.7	0	30.8		100
	Ft. Polk	4.2	11.1	0	100		
	Ft. Riley	0	10.4	0	0		
	Ft. Sam Houston	0	24.6	0	16.7		100
Ft. Sill	0	30.4	0	100			
RHC-E	Landstuhl Regional Medical Center	0	20.5	0	2.2	0	2.2
RHC-P	Ft. Wainwright	0	3.3	0	43.5		
	Korea	0	41.7	0	0	0	3.9
	Tripler Army Medical Center	0	22.1	0	10.3	2.4	0

Region	Installation	Enterovirus		Parainfluenza		Respiratory Syncytial Virus	
		% Positive	Baseline % Positive	% Positive	Baseline % Positive	% Positive	Baseline % Positive
RHC-A	Ft. Belvoir				1.2	0	12.8
	Ft. Gordon				100	0	100
	Ft. Stewart					0	7.7
RHC-C	Ft. Bliss					0	8.9
	Ft. Carson					0	17.2
	Ft. Hood	16.7		0	4.5	0	13.6
	Ft. Riley					0	23.1
	Ft. Sill				100	0	50
RHC-E	Landstuhl Regional Medical Center			0	0	0	16.7
RHC-P	Korea		0	0	1.3	0	6.6
	Tripler Army Medical Center	31.6	0	0	0		100

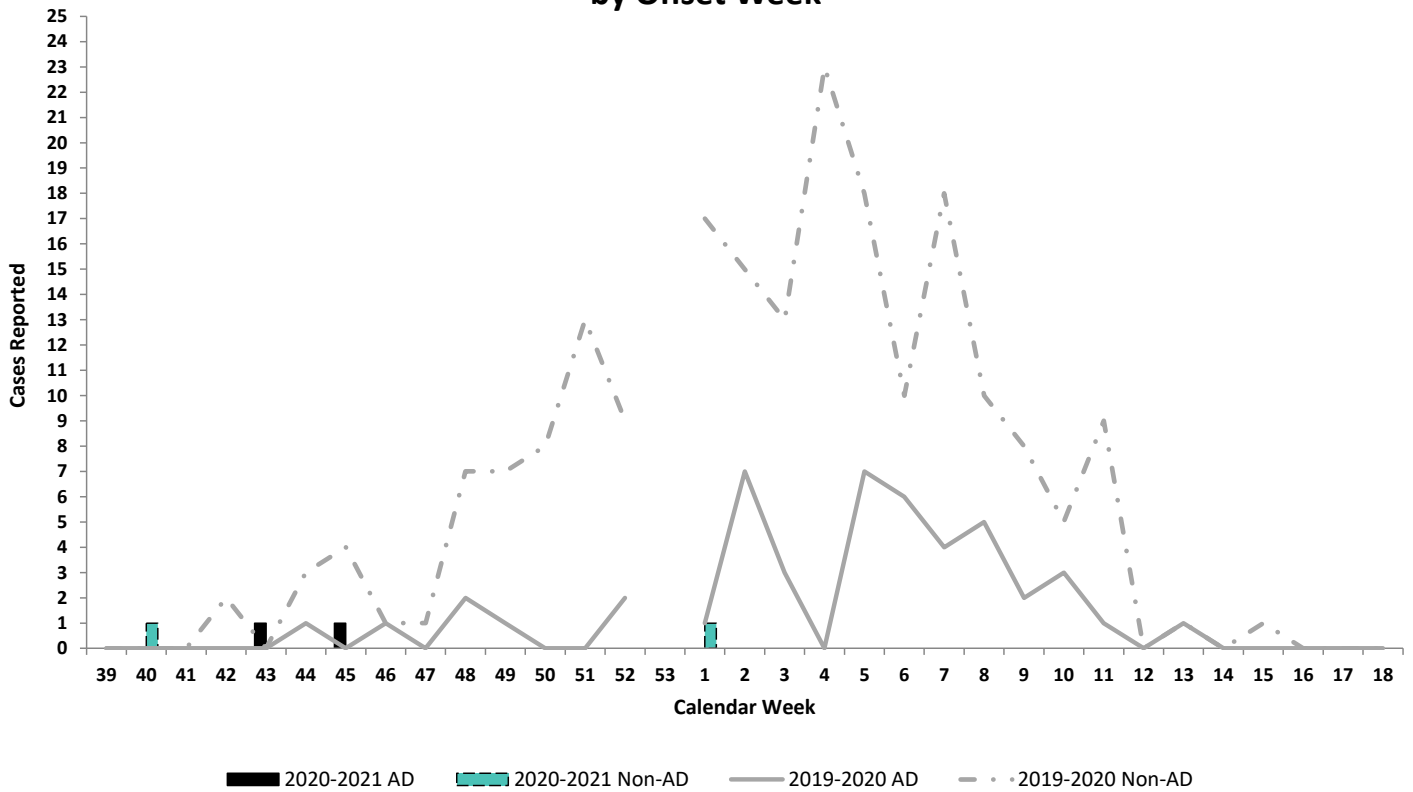
% Positive: Percentage of positive specimens reported during MMWR week 3, 2020/2021 season.

Baseline % Pos.: Percentage of positive specimens reported in MMWR week 3 during influenza seasons from September 2012 - May 2020.

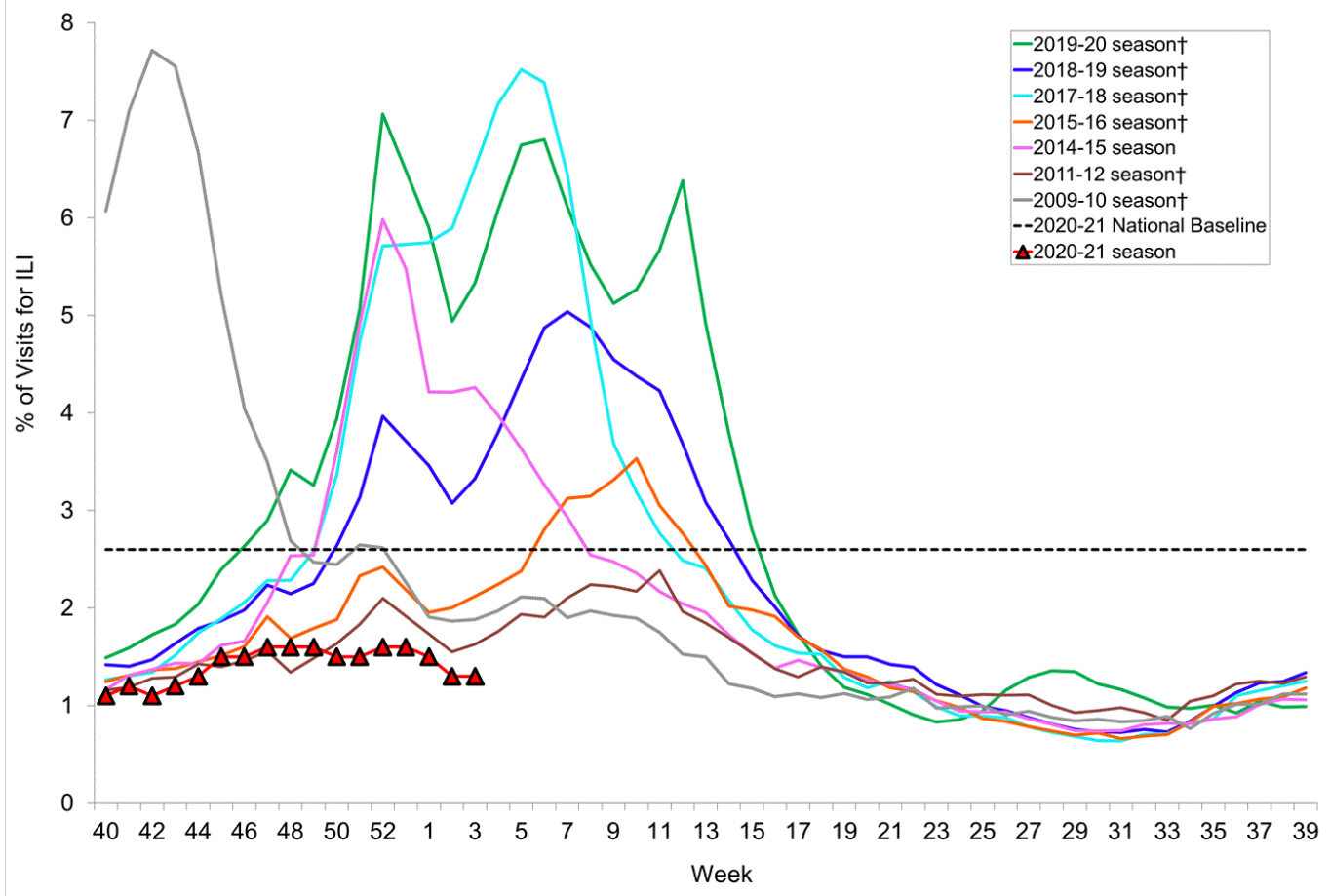
Missing values indicate that specimens were not tested for the disease during the week of interest.



Army Influenza-Associated Hospitalizations Reported in DRSi by Onset Week

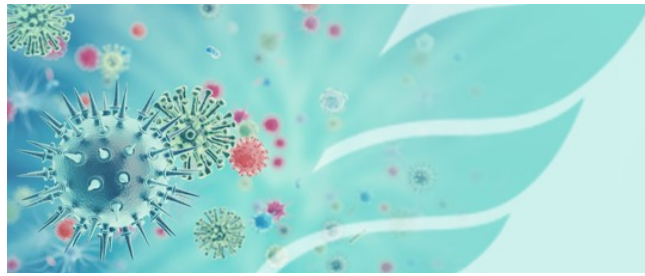


Percentage of Visits for Influenza-like Illness (ILI) Reported by
 the U.S. Outpatient Influenza-like Illness Surveillance Network (ILINet),
 Weekly National Summary, 2020-2021 and Selected Previous Seasons



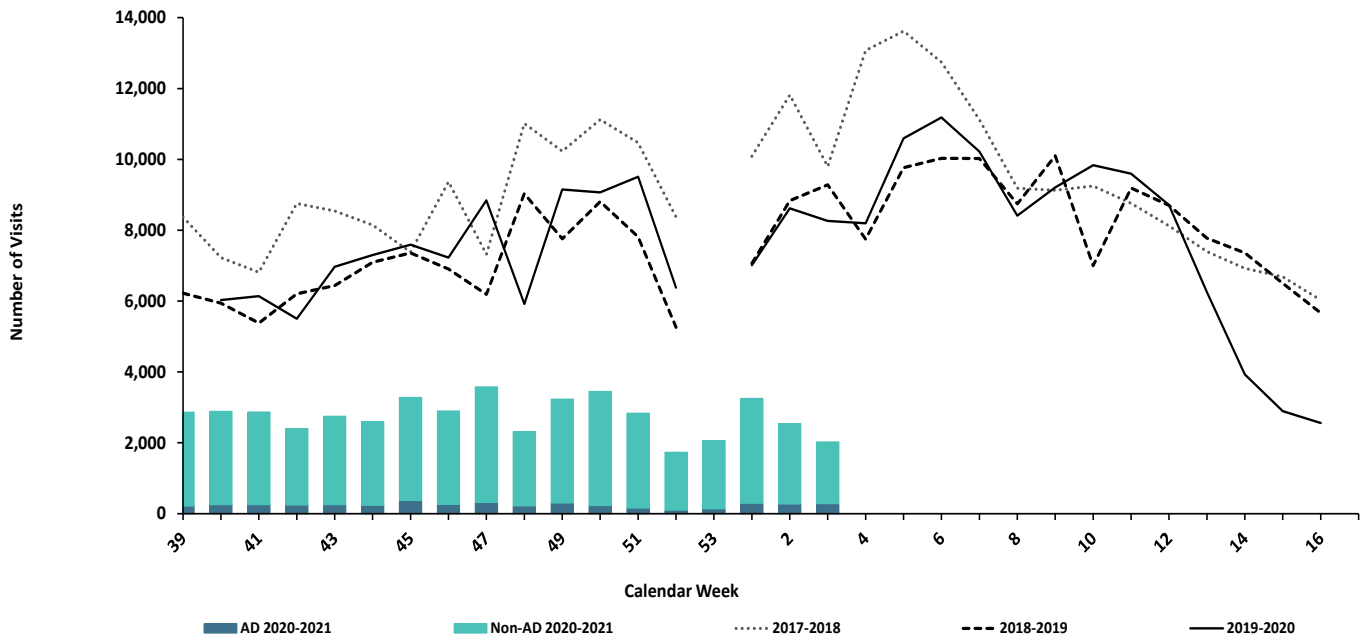
†These seasons did not have a week 53, so the week 53 value is an average of week 52 and week 1.

Source: Centers for Disease Control and Prevention (CDC)

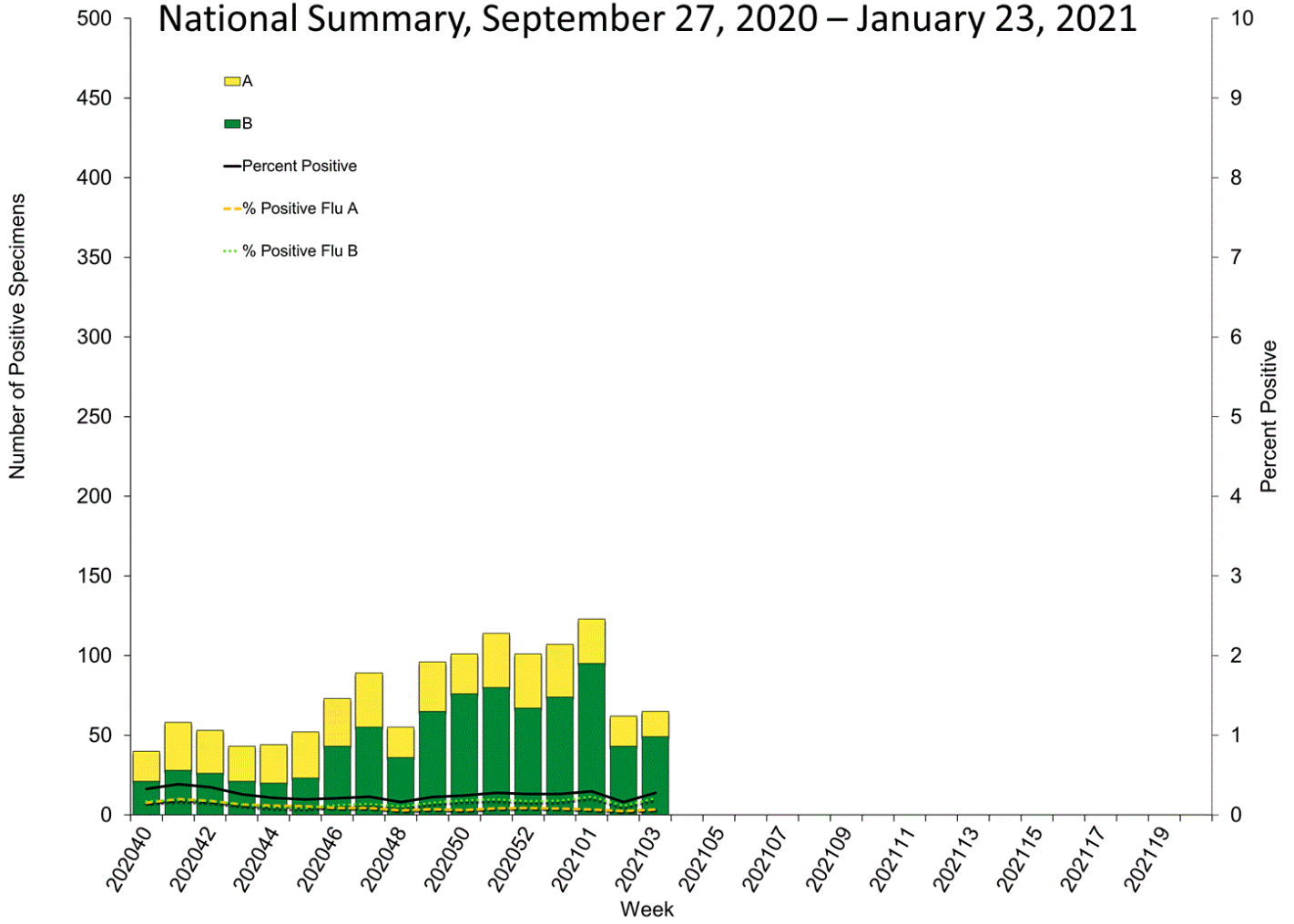


U.S. Army Public Health Center
Army Influenza Activity Report
Week ending 23 January 2021 (Week 3)

ESSENCE Weekly Outpatient Clinic Visits for Influenza-like Illness
Army MTFs, All Services, 2017-2021



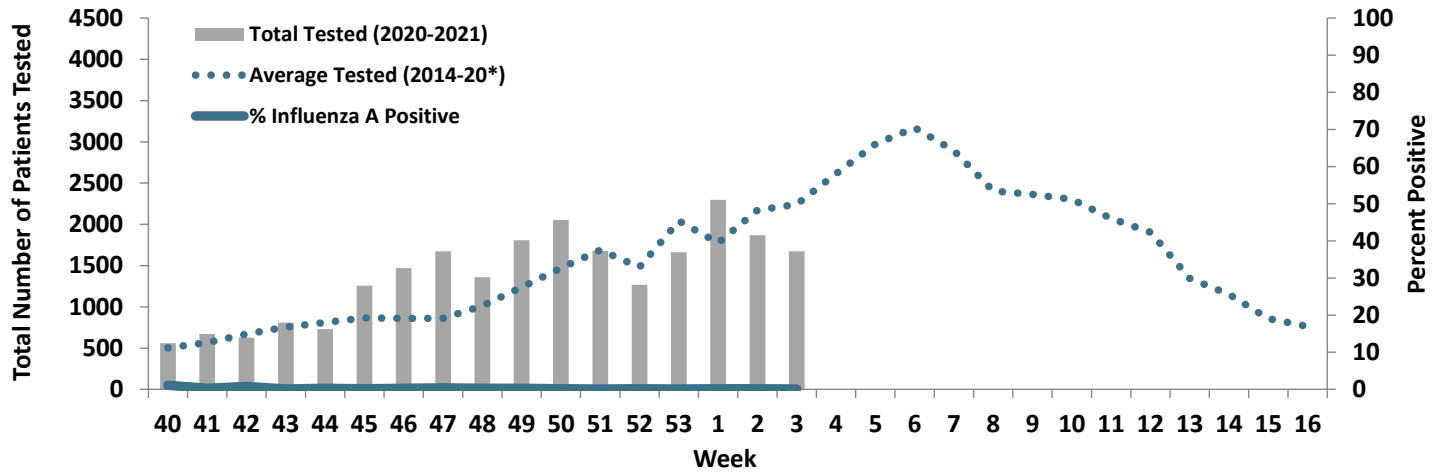
Influenza Positive Tests Reported to CDC by U.S. Clinical Laboratories, National Summary, September 27, 2020 – January 23, 2021



Source: Centers for Disease Control and Prevention (CDC)



Proportion of Positive Influenza A Specimens for U.S. Army 2020-2021



*2014/2015 influenza season - 2019/2020 influenza season